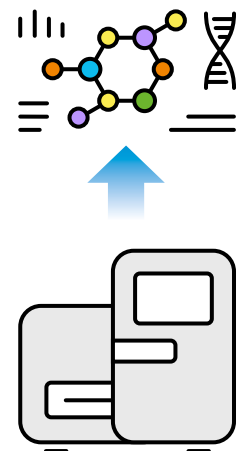


GXP BioInfonomics Suite

Our freshly updated bioinformatics analysis tool for all your raw NGS data

Features

- Extract all the insights you need from your data.
- DNA, RNA, Microbiome, and Epigenetic Data Analysis for Model and Non-Model Organisms, as well as custom requests.
- Compatible with common data formats from Illumina® NGS systems.
- Handle your jobs quickly with our computing power.
- No matter your level of expertise, our bioinformatics specialists are here to support you at every stage of the process.
- We provide more than just results – we offer continuous support to help you fully interpret and make the most of them.



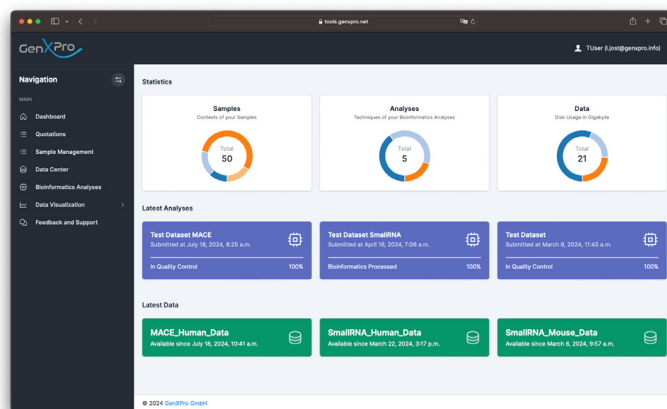
GXP BioInfonomics Suite

Bioinformatics analysis tool
for all your raw NGS data

Exclusively available
for our costumers

Our powerful analysis suite for

- Whole Genome Sequencing (WGS)
- Whole Exome Sequencing (WES)
- RNA-Seq
- TQ MACE-Seq (3' mRNA-Seq)
- TQ small RNA-Seq
- TQ pan-RNA-Seq
- Microbiome
- Amplicons & Aptamers



To put it in a nutshell – these are your options

- Variant calling and annotation
- Copy Number Variations (CNVs)
- Epigenetic data
- ChIP Seq data
- ATAC-Seq data
- Gene expression data
- Gene fusions
- Small RNAs/ miRNAs
- GO enrichment, GSEA, pathways
- Genotyping by Sequencing (GBS) pipeline
- 16s RNA based
- Metagenomics based / shotgun sequencing
- De novo assembly and annotation
- Actionable mutations
- Malignant pathways
- Therapeutic options

Please login to our BioInfonomics Suite at
<https://tools.genxpro.net> to view samples.

Username: TUser Password: testtest

www.genxpro.de